

Phil says



Using multi purpose
insulation is easy...
when you know how.

Have a skim through
Phil's step-by-step guide
to using Rockwool Flexi.

- Acoustic Partitions
- Separating Floors
- Internal Floors
- Separating Walls
- Exterior Walls & Roof



GET FLEXI. GET THE JOB DONE

www.rockwool.co.uk

ROCKWOOL
FIRESAFE INSULATION

ROCKWOOL
FIRESAFE INSULATION



Just read on to find out **how easy** it is to use the **only tested and approved** multi-use insulation product. It's all you'll ever need.

No one beats us on fire, thermal, acoustic and environmental performance.

Key features

SUPERIOR SOUND PERFORMANCE

- Flexi's snug fit eliminates gaps and stops sound getting through

FIRE SAFE

- Flexi acts as an effective fire stop
- Flexi boasts an A1 European reaction to fire classification
- Flexi withstands temperatures over 1,000°C

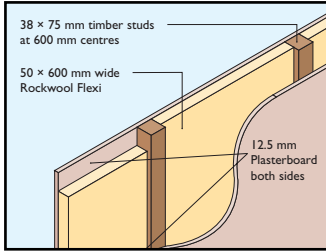
THERMALLY EFFECTIVE

- Flexi's perfect friction fit between timber or metal studs maintains excellent insulation levels and minimises cold bridging



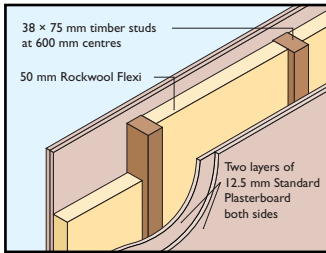
Acoustic Partitions

High performance partitions are easy with Rockwool Flexi.



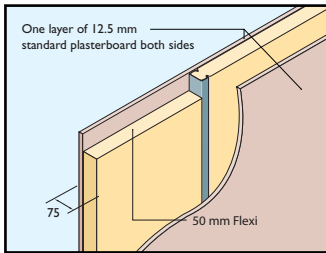
Lightweight timber stud partition

- **Studs:** 38 x 75mm at 600mm centres
- **Facings:** Single layer of 12.5mm Standard Plasterboard (11Kg/m²) each side
- **Infill:** Minimum 50mm Rockwool Flexi



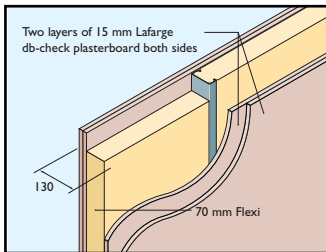
Typical office partition

- **Studs:** 38 x 75mm timber studs at 600mm centres
- **Facings:** 2 layers 12.5mm of standard plasterboard (8Kg/m²) each side
- **Infill:** Minimum 50mm Rockwool Flexi



Lightweight metal stud

- **Studs:** 50mm metal studs at 600 centres
- **Facings:** 1 layer 12.5mm standard plasterboard (8Kg/m²) each side
- **Infill:** Minimum 50mm Rockwool Flexi



Enhanced performance: schools, offices and public buildings

- **Studs:** 70mm metal studs at 600mm centres
- **Facings:** 2 layers 15mm plasterboard (13Kg/m²) each side
- **Infill:** Minimum 70mm Rockwool Flexi

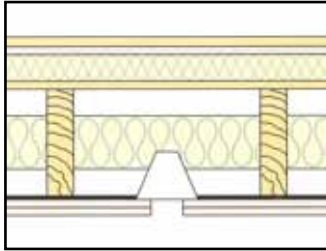
Acoustic Performance (dB)	Fire Resistance (minutes)	Height (m)
RW 40	30	3.0
RW 46	60	3.0
RW 41	30	2.5
RW 57	90	4.6

Floors

Choose resilient Rockwool Flexi for hardwearing floors.

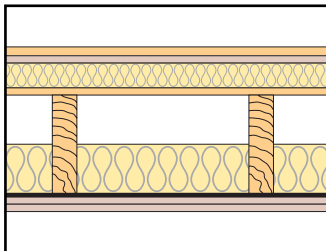


SEPARATING FLOORS



Timber platform floor with recessed downlighters (new build)

- 18mm t&g flooring grade chipboard on
- 15mm Plasterboard (13Kg/m²) on
- 50mm Rockwool Rockfloor on
- 15mm OSB on
- 200 x 50mm timber joists at 400mm centres
- 100mm Rockwool Flexi between joists
- Resilient bars fixed at right angles to joists at 400mm centres
- Ceiling finish, 2 layers of 15mm plasterboard (13Kg/m²)
- Aspect lighting 60mm downlights (1per 1.8sqm) with
- Tenmatt FF 109 downlighter covers



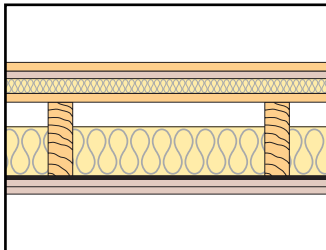
Separating timber floor treatment: Platform floor with absorbent material (material change of use - flat conversion work)

- Min 2 layers of board material to provide min total mass 25Kg/m² spot bonded together with joints staggered (eg 18mm t&g flooring grade chipboard and 19mm plasterboard plank)
- The floating layer to be loose laid over the Rockfloor
- 25mm (min) Rockwool Rockfloor resilient layer laid on
- Existing floor deck on existing timber floor joists
- 100mm Rockwool Flexi between joists
- Existing ceiling upgraded to 20Kg/m². If existing ceiling is of lath & plaster it should be retained providing it satisfies Part B - Fire Safety

(If in doubt, underdraw with an additional layer of 12.5mm fire resistant plasterboard & screw into joists)

Acoustic Performance (dB)		Fire Resistance (minutes)
Airborne	Impact	
53	54	60
43	64	60

Acoustic Performance (dB)
Fire Resistance (minutes)
Height (m)

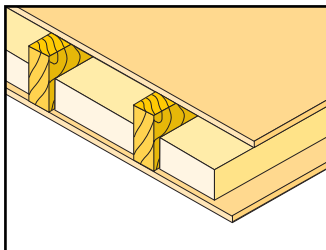


Separating timber platform floor construction (new build)

- 18mm t&g flooring grade chipboard spot bonded to 15mm Plasterboard (total mass 28Kg/m²)
- 30mm (min) Rockwool Rockfloor resilient layer
- Min 15mm OSB floor deck on existing timber floor joists (min 195mm x 45mm)
- 100mm Rockwool Flexi between joists
- Resilient bars fixed at right angles to joists at 400mm centres
- Ceiling finish 2 layers of 15mm Plasterboard 13Kg/m²)

Airborne 48
Impact 57
60

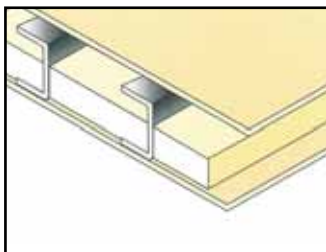
INTERNAL FLOORS



Timber joist internal floor within the same dwelling

- **Studs:** Timber joists at 400mm centres
- **Facings:** Standard 18mm t&g flooring grade chipboard, mass per unit area 12.4Kg/m². Single layer of standard 12.5mm plasterboard ceiling mass per unit area 8Kg/m²
- **Infill:** Minimum 100mm thick Rockwool Flexi between joists

40 - -



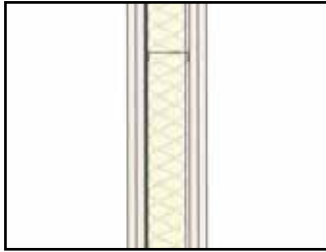
Internal metal joisted floors within the same dwelling

- **Studs:** Metal floor joists at 400mm centres
- **Facings:** Timber floor minimum mass per unit area 15Kg/m² (e.g. 22mm chipboard). Single layer plasterboard, minimum mass per unit area 10Kg/m² (e.g. 15mm standard plasterboard)
- **Infill:** Minimum 100mm thick Rockwool Flexi between joists

40 - -

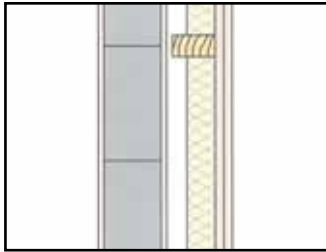
Separating Walls

Whatever the wall, Rockwool Flexi does the job.



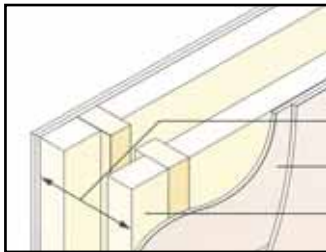
Separating new build metal frame wall construction

- **Studs:** 70mm metal 'C' studs at 600mm centres
- **Facings:** 2 layers of 15mm plasterboard (13Kg/m²) one side. Other side: 2 layers of 15mm plasterboard (13Kg/m²) fixed to resilient bars (spaced at 600mm centers)
- **Infill:** 70mm Rockwool Flexi



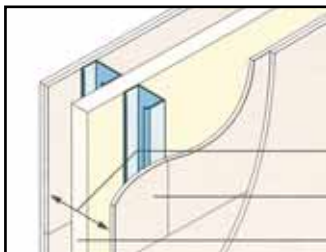
Separating wall (conversion work) existing solid masonry wall

- **Studs:** Independent timber or steel studs, minimum 10mm gap to be maintained between frame and existing wall
- **Facings:** 100mm minimum existing solid masonry wall plastered on both faces. 2 layers of 15mm standard plasterboard (10Kg/m²)
- **Infill:** 50mm Rockwool Flexi between studs
- Avoiding flanking transmission: seal perimeter edges of new plasterboard with tape or Rockwool Acoustic Sealant
- If existing masonry wall is not plastered or less than 100mm thick then independent panels should be applied to both sides



Separating wall timber frame (twin timber frames) conforms with robust detail E-WT -1

- **Facings:** 240mm minimum between inner faces of wall linings. 50mm minimum gap between studs. 2 or more layers of gypsum based board (total nominal mass per unit area 22Kg/m²) both sides
- **Infill:** Minimum 60mm Rockwool Flexi both sides



Separating wall-steel frame-twin metal frames for use in lightweight steel frame houses and flats/apartments conforms with robust detail E-WS -1

- **Facings:** 200mm minimum between inner faces of wall linings. 2 or more layers of gypsum based board (total nominal mass per unit area 22Kg/m²) both sides
- **Infill:** Minimum 50mm Rockwool Flexi

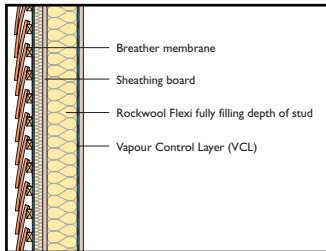
	Acoustic Performance (dB)	Fire Resistance (minutes)	Height (m)
RW 57	90	4.6	
RW 43	-	-	
RW 50	MIN 60	-	
RW 50	MIN 60	-	

Exterior Walls & Roof

For top quality roof and exterior walls use Rockwool Flexi.



EXTERIOR WALLS

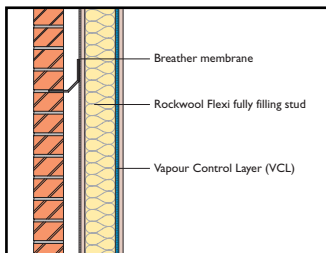


Timber frame wall with tile hanging

- **Studs:** Timber studs to suit 400mm/600mm centres
- **Facings:** External tile hanging or weatherboard
- **Infill:** Rockwool Flexi between the studs

U value W/m²K
Flexi thickness (mm)

0.35	120
0.30	140
0.25	180



Timber frame cavity wall

- **Studs:** Timber studs at 400mm/600mm centres
- **Facings:** Outer skin of brick or block with 50mm clear cavity
- **Infill:** Rockwool Flexi between the studs

0.41	90
0.38	100
0.33	120
0.28	140


ROOF



Insulation at rafter level

- **Facings:** Roofing tiles or slates
- **Rafters:** Timber rafters at 400mm/600mm centres
- **Infill:** Rockwool Flexi between rafters

0.22	200
0.21	220
0.19	240

A man with short brown hair, wearing a red and blue plaid shirt over a white t-shirt and a tan tool belt, is looking towards the camera with a slight smile. He is holding a small, rectangular piece of green Rockwool insulation in his right hand. The background is a solid bright yellow.

**So, now you know.
Don't forget to
tell your mates...**

**ROCKWOOL
FLEXI.**

**It's all you'll
ever need.**

www.rockwool.co.uk

ROCKWOOL
FIRESAFE INSULATION